



Legislative Agenda for the 118th Congress

Communities In Schools® (CIS™) is a national organization that ensures every student, regardless of race, zip code, or socioeconomic background has what they need to realize their potential in school and beyond. Working directly inside 2,900 schools across the country, we connect students to caring adults and community resources that help them see, confront, and overcome the barriers that stand between them and a brighter future. Together, we build a powerful change movement made up of peers, students, and alumni committed to shaping an equitable path to education for future generations.

We envision a future in which every child in the United States has a community of support that empowers them to achieve the future they want. The pandemic has presented many challenges for students and families. We cannot go back to normal. Normal was not working for all students—especially not for those impacted by poverty. At Communities In Schools, we see this as an opportunity to chart new pathways to equity in our education system through a thoughtful and coordinated approach to re-engagement.

To achieve this goal, Communities In Schools is committed to advocating beyond our organizational footprint and will embrace a policy agenda that will promote the well-being of all children in need.

What we are advocating for:

- Increase access to integrated student supports (e.g. wrap around services) for children in need
- Create funding opportunities allowing schools to hire school-based coordinators and for professional development of school-based staff to implement high-quality integrated student supports
- Focus on social, emotional, and academic development and trauma-informed care as one critical way to address the pandemic, school climate, school safety, and the opioid crisis
- Lower rates of exclusionary discipline practices through the alternative implementation of social, emotional, and academic development and positive behavioral interventions

Appropriations Requests (Fiscal Year 2024)

- Full-Service Community Schools: \$368 million, including \$25 million for competitive Integrated Student Supports Grants
- 21st Century Community Learning Centers: \$2.09 billion
- Corporation for National Community Service: Continue to receive robust funding
- Title IV Part A: \$1.405 billion
- Youth Mentoring Grant: \$130 million
- Advancing Wellness and Resilience in Education (Project AWARE): Continue to receive robust funding

Legislative Request

Fund Integrated Student Supports Grants

The President's FY2024 Budget Request included \$368 million for Full-Service Community School Funding which includes \$25 million for Integrated Student Supports grants.

A growing body of research shows that students succeed when schools embrace a whole child perspective that integrates academic development and addresses out-of-school factors that interfere with learning.

Our model of integrated student supports is about leveling the field by making sure all students have access to the community resources and tools they need to unlock their potential and thrive.

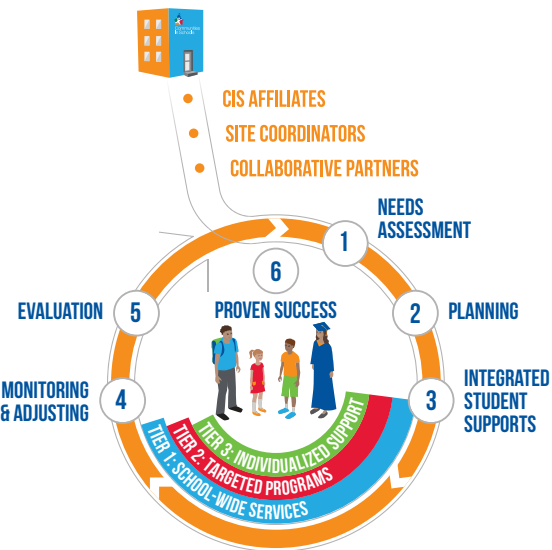
It starts with our site coordinators—the caring adults who are in schools walking by students' side to get a deep understanding of the barriers and challenges they face. Across our network, site coordinators build, strengthen and maintain relationships with students and their families.

Evidence-based integrated student supports equip every student to take on and tear down the barriers that stand between them and an equitable path to education.

Top 10 Federal Funding Sources for CIS Affiliates 2021-22

- 21st Century Community Learning Centers (Title IV-B)
- Title I of ESSA
- Temporary Assistance for Needy Families (TANF)
- AmeriCorps
- Workforce Innovation and Opportunity Act (WIOA)
- Full-Service Community Schools
- Federal TRIO Program
- State Abstinence
- Gaining Early Awareness and Readiness for Undergraduate Programs (GEAR UP)
- Title IV-A of ESSA

Our Unique Model



CIS AFFILIATES

Hire and train site coordinators, bring the CIS model to schools in need and mobilize partners to provide resources.

SITE COORDINATORS

Trained professionals who work with school administrators to assess needs, develop a plan and build a team to provide supports to schools and students.

COLLABORATIVE PARTNERS

Schools, businesses and community agencies all work together with site coordinator to deliver supports to students and families.

1 NEEDS ASSESSMENT

Analyze multiple sources of data to identify the key needs of the school and individual students.

2 PLANNING

Site coordinators lead their school support team to develop a plan to prioritize supports that address academic and non-academic needs.

3 INTEGRATED STUDENT SUPPORTS

Site coordinator and partners deliver tiers of support to the school, students and their families.

ACADEMIC ASSISTANCE	BASIC NEEDS	BEHAVIORAL INTERVENTIONS	COLLEGE & CAREER PREP	COMMUNITY & SERVICE LEARNING
ENRICHMENT	FAMILY ENGAGEMENT	LIFE SKILLS	MENTAL HEALTH	PHYSICAL HEALTH

4 MONITORING & ADJUSTING

Site coordinator continuously monitors student and school progress and adjusts supports to optimize results.

5 EVALUATION

Continuous assessment of partners and student supports by the CIS affiliate to demonstrate results and improve practice.

6 PROVEN SUCCESS

We increase graduation, reduce dropout, and improve attendance for schools in need.

For additional information, please contact Jennifer Herrera, Principal, Policy and Legislative Affairs at herreraj@cisnet.org.